

**GETTING STARTED WITH**  
**MACROMEDIA DREAMWEAVER AND**  
**DYNAMIC PSP**  
**TUTORIAL**

**VERSION 1.1.0**

Copyright© 2002-2004 by OOO Hit-Media  
All rights reserved.

Document ID: 001-205001-006  
Last Revision: April 19, 2004

**COPYRIGHT INFORMATION AND ACKNOWLEDGEMENTS**

JOPA, DPSP, Dynamic PSP, PPSP, Procedural PSP, OPSP and Objective PSP are trademarks of OOO Hit-Media

DPSP Interpreter, DPSP System Units and this document are Copyright© 2000-2004 by OOO Hit-Media

JOPA Gateway Servlet is Copyright© 2002-2004 by OOO Hit-Media

Oracle is the registered trademark of Oracle Corporation.

PL/SQL, Oracle8i, Oracle9i, Oracle Internet Server, Oracle WebServer and Oracle WebServer Option are trademarks of Oracle Corporation.

Sun, Sun Microsystems, the Sun Logo and Java are trademarks or registered trademarks of Sun Microsystems Inc. in United States and other countries.

Other company, brand or product names are mentioned for identification purposes only and may be service marks, trademarks, or registered trademarks of their respective owners.

Although every effort was taken to make this document as accurate and complete as possible, no guarantees whatsoever are given in regard to document's accuracy and completeness. Also, no guarantees are given that this document fully covers the functionality of the product it describes.

Information in this document is subject to change without notice. Please consult the change log in release notes accompanying the product for changes in current product release.

### USING WEBDAV MODE.

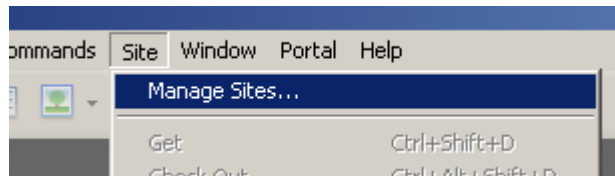
WebDAV, or Distributed Authoring and Versioning through the Web, is the popular protocol supported by many web development tools, like Microsoft® FrontPage® and Macromedia® DreamWeaver™, which allows remote access and manipulation on the website content through the extensions to the HTTP protocol. The JOPA Gateway Servlet provides full support for WebDAV Level 1 and Level 2 operations, including authentication, node locking and unlocking, version control, etc. Support for WebDAV is implemented through special DADs configured to WebDAV mode. In this mode, the DAD cannot be used for normal operations, like executing PL/SQL procedures or DPSP units.

WebDAV mode requires DPSP NTS module to be installed and operational on the backend, because the site structure as seen through the WebDAV is maintained in the NTS tree.

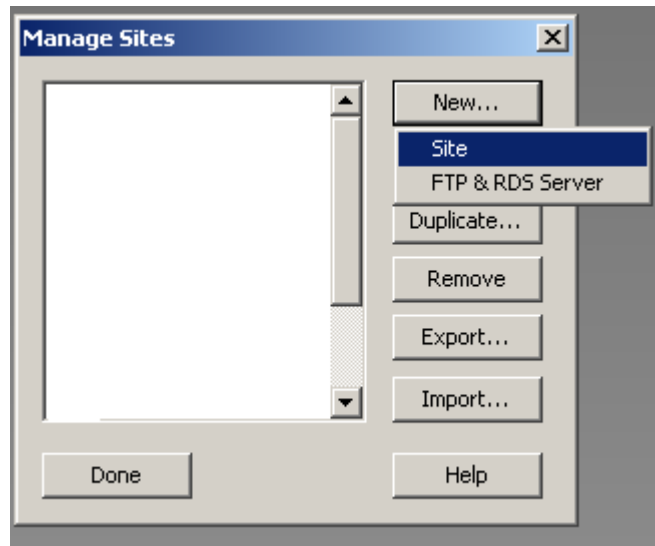
### CONFIGURING THE CLIENT SOFTWARE.

We will use Macromedia DreamWeaver MX 2004 as an example of the WebDAV client software, other software may have different dialogs and field names, but the overall setup will be the same.

#### 1. Menu -> Site -> Manage Sites



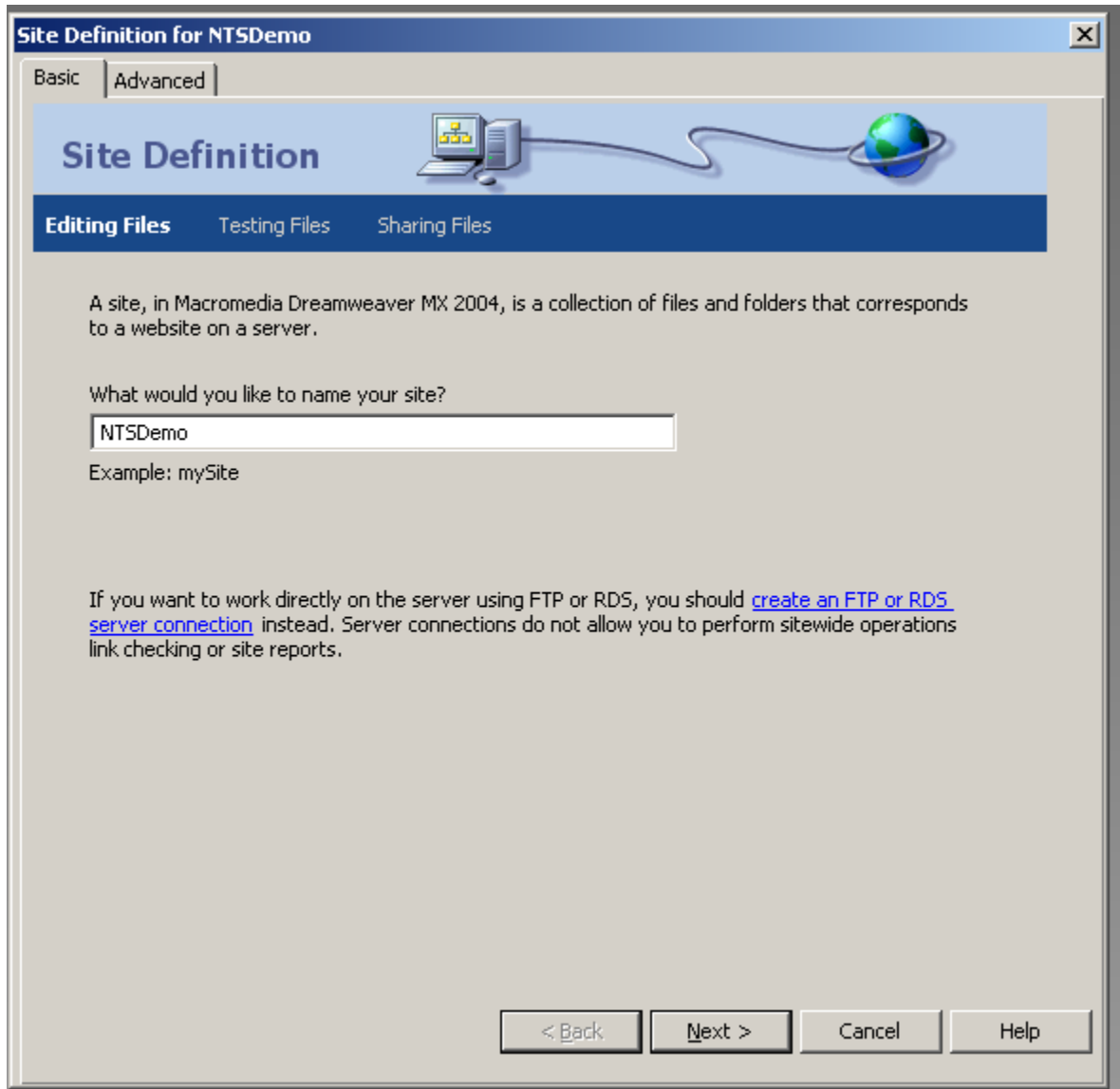
#### 2. Click on New-> Site



**3. Create a new DreamWeaver site:**

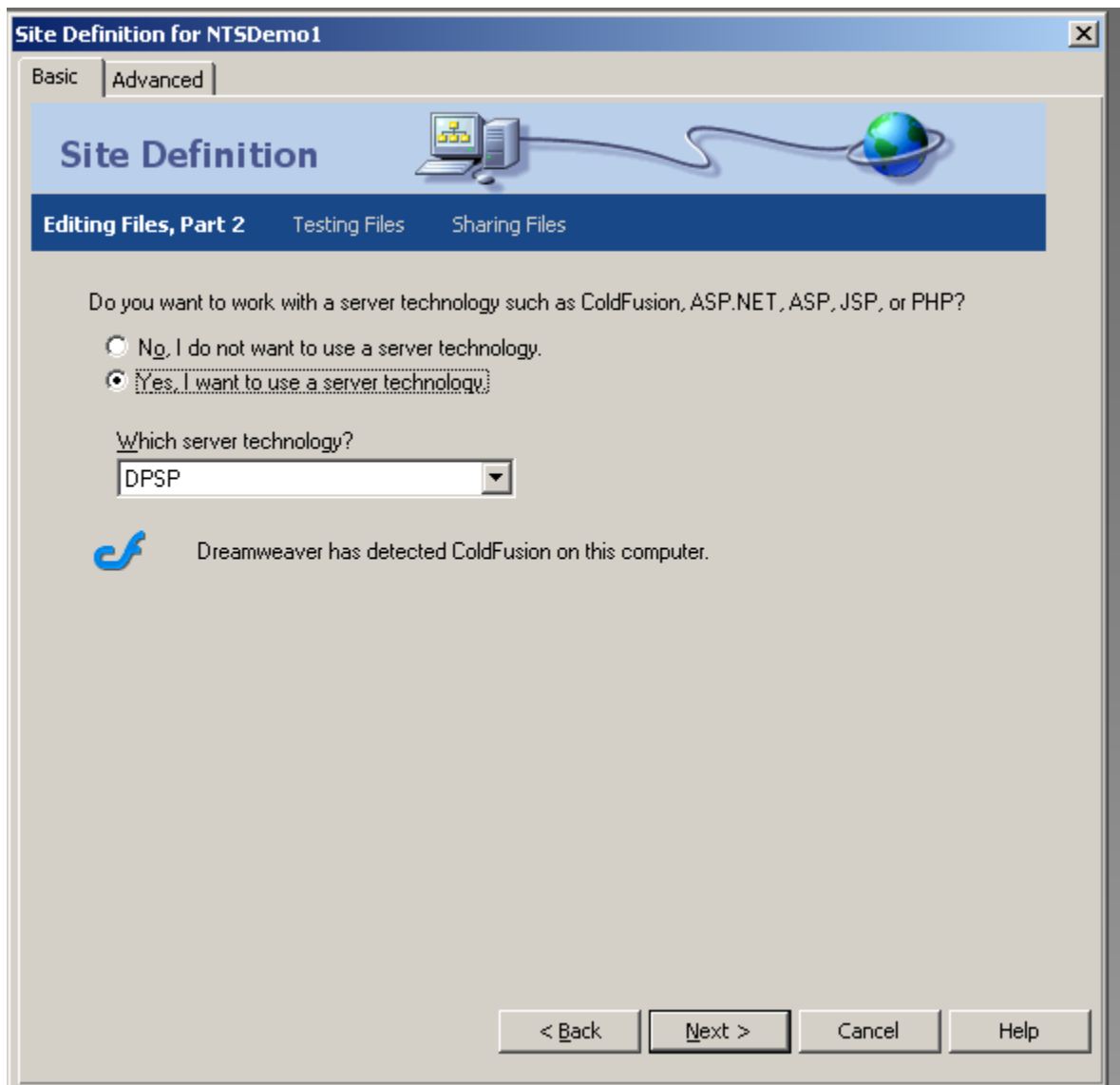
Enter any name for your new site (NTSDemo in this example.) Click the **Next** button to continue.

On the next screen, select your desired option for the server technology (you may download the DreamWeaver extension for Dynamic PSP Server Technology support from our web site at <http://www.dynamicpsp.com>.) If you did not install the Dynamic PSP Server Technology extension, leave this option as **None**.

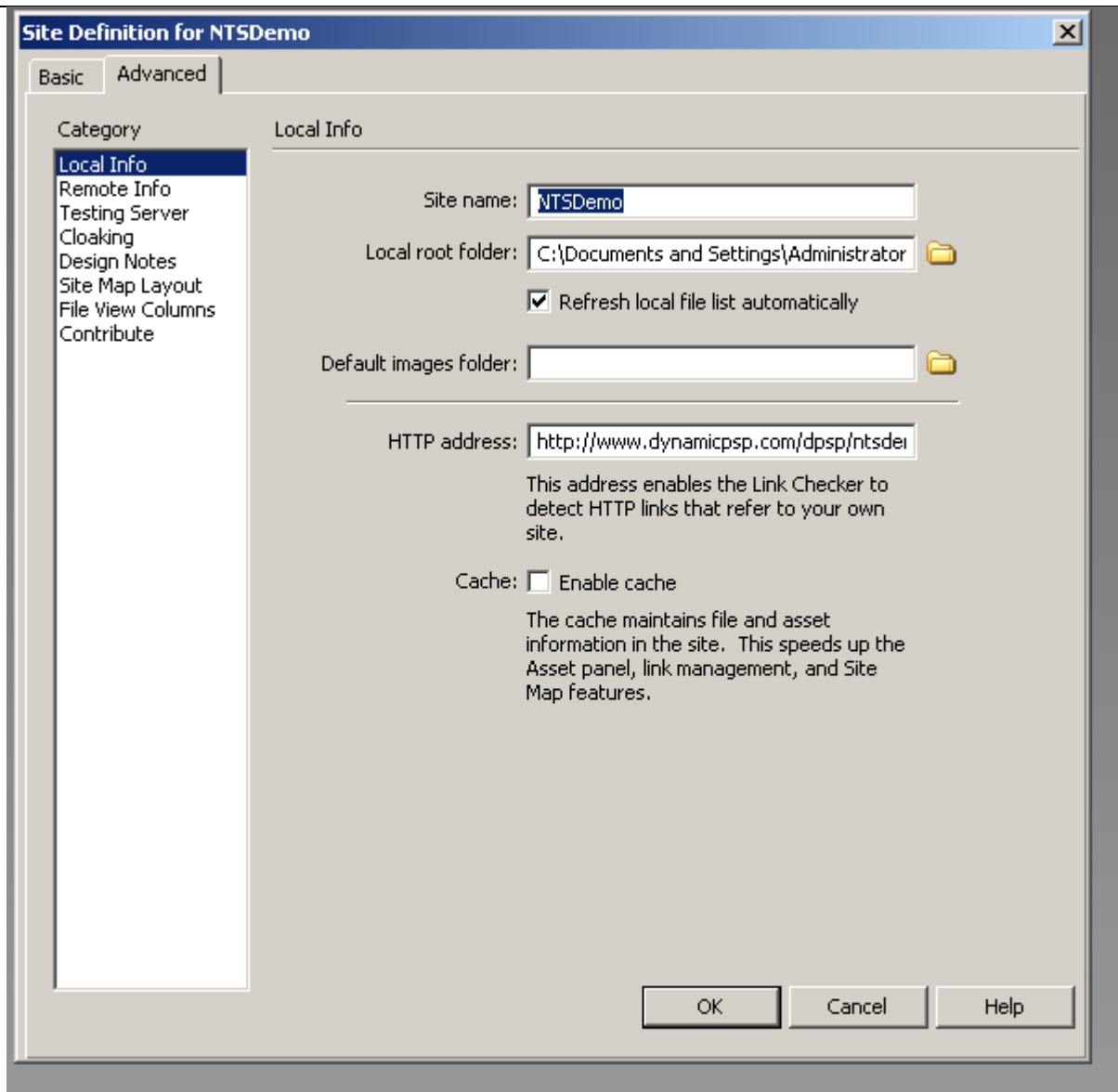


On the next screen, select how you want the site to be edited – locally or remotely. If you will edit the site locally, DreamWeaver will automatically synchronize your local copy with remote copy when you establish connection with the remote site.

On the next screen, select WebDAV as the site connection:

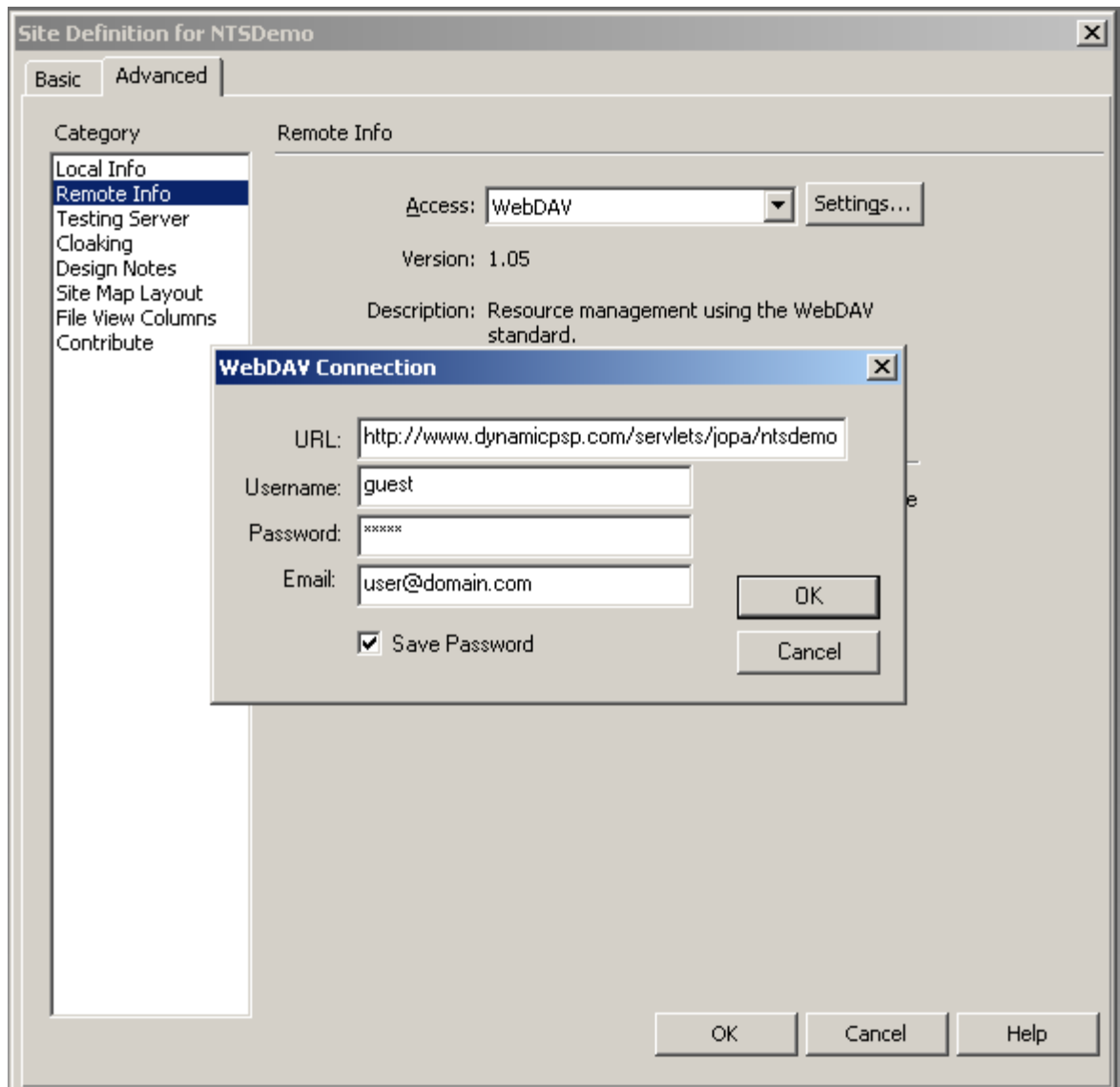


**4. Local Info** http address : <http://www.dynamicpsp.com/dpsp/ntsdemo/go?ln=>



## 5. Remote Info.

Configure the WebDAV connection by clicking the **Settings...** button and typing in necessary connection information:



Type in the URL to the WebDAV DAD you have created and authentication information that will be used to access the DAD (username and password should be registered in Dynamic PSP; these are **not** Oracle username/password.) Note that for proper locking functionality the Email field should not be left blank, because it is used for identifying who locks the content. Click **OK** to save the connection configuration.

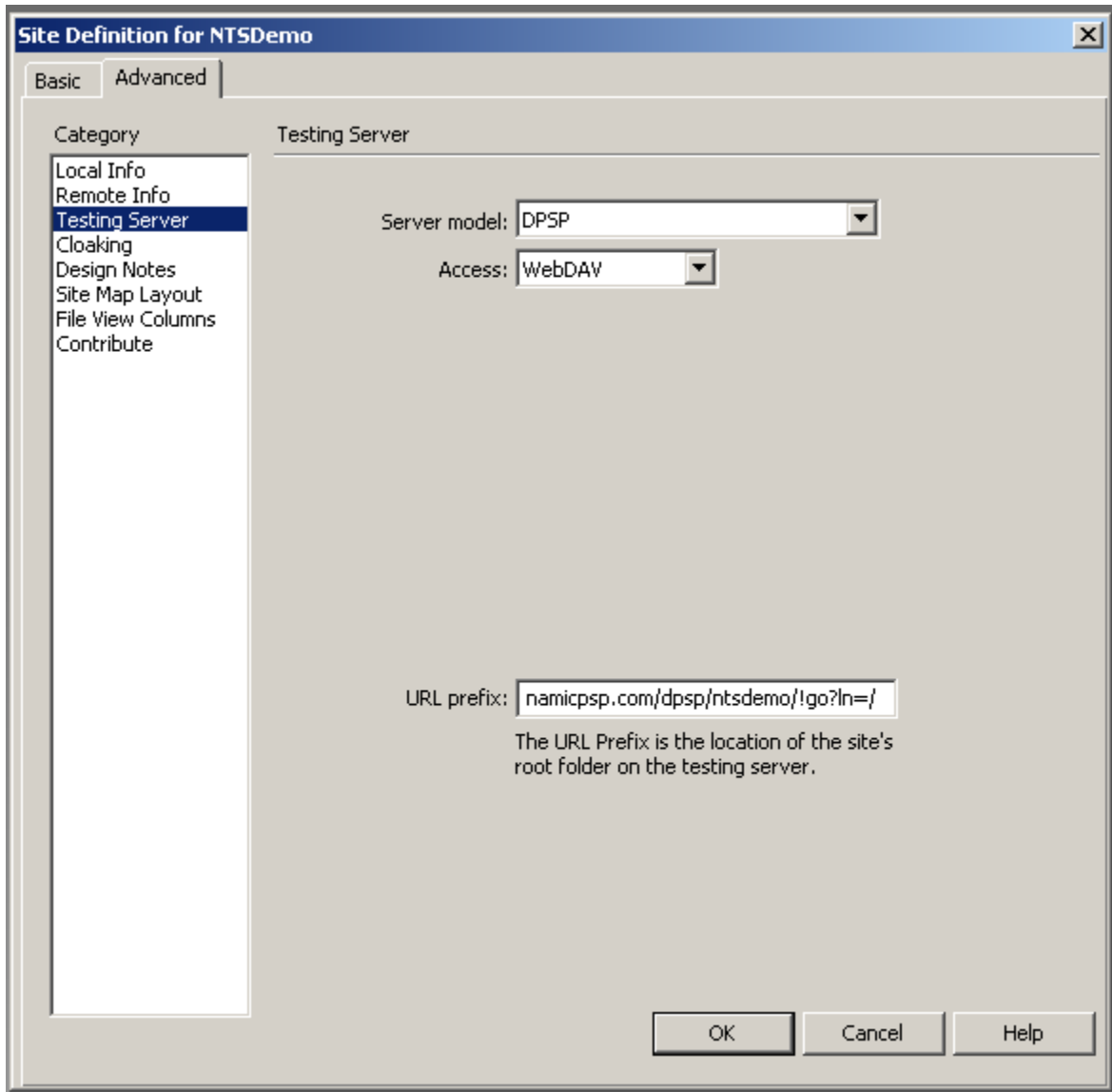
Use Username **guest** and Password **guest** to look demo online at our demo site.

Next, you may want to setup testing server or finish the configuration. To setup testing server, switch to the **Advanced** tab, select **Testing Server** category, select WebDAV as access method and type in the URL prefix that will map to a Native mode DAD, which will access the same schema as the WebDAV DAD:

## 6. Testing Server.

You should not use the same URL (<http://www.dynamicpsp.com/dpsp/ntsdemo!/go?ln=/>) for both WebDAV and Testing Server, because WebDAV DADs do not support normal requests – they return pages source code without inter-

preting them. If you do not plan to test your designs from within the DreamWeaver, you may skip testing server setup altogether.



You now have the DreamWeaver site configured for WebDAV access. To test the setup, connect to the remote site using the connect button in the Files panel – you should see the connection progress dialog and then the tree view of the remote site (matching the NTS tree for the target schema.)

Look at the link [http://www.dynamicsp.com/dpsp/prod/!go?ln=np\\_DWMX2004](http://www.dynamicsp.com/dpsp/prod/!go?ln=np_DWMX2004) in order to understand how to edit a Dynamic PSP content.



# NOTES

---